

Univest Leasing Inc.

www.univestleasing.ca



Price — \$509,000

1413 JV Parkway, Severn, Ontario L3V 0V4 - Lot 426

Titan Senator — 24' x 48'

Land is Leased—Compass—Current Monthly Rent \$589.58 inc. prop tax

Modular Home

Bedrooms 2

Bungalow

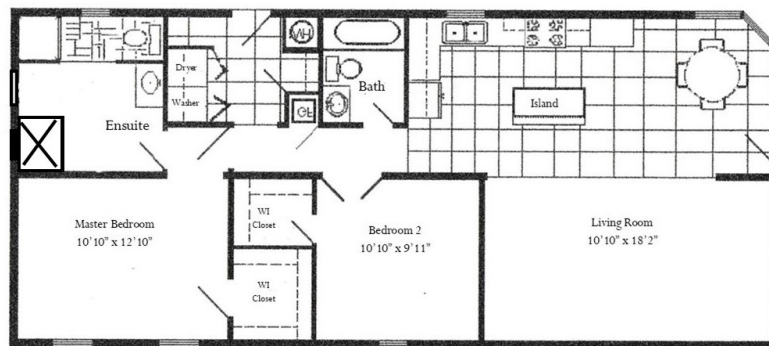
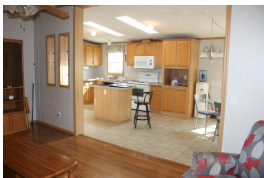
Washrooms 2 full

Skirted/Crawl Space

Garage Double Extended

Interior		Exterior		Inclusions	
Heat	Forced Air/Gas	Vinyl Siding	Awning on porch	Refrigerator	Samsung 2016
	3 years old				
	Morrison Climate Control	Drive	2 parking spots	Stove/Oven	GE Electric 2017
Water Heater	2019 Electric 178 lt capacity	Wrap around Porch	8' x 44' 7' x 12'	Dishwasher	Bosch 2024
				Microwave	Magic Chef 2024
Water Supply	Compass/Wells Artesian Fed	Approx Sq Ft	1,152	Washer Dryer	GE 2024 164 kWa GE
Bedroom—Master	Walk in Closet Ensuite Full	Garage—detached	Double Extended	Other	Talk to Diane
Bedroom—2nd	Walk in Closet	GFI electrical plug	Over panel side of house	Window Treatments	All rooms
Bath—2nd	Full	Sky Lights	2 in kitchen 1 in 2nd bath	Warranties	In Good Working Order

Exclusions - Wall Unit in Living Room



Contact: Diane Osborne
 1400 Ryerson Boulevard, Severn, Ontario L3V 0X2
 Telephone: 1-249-385-7102, diane@univestleasing.ca

